



# Solara<sup>®</sup> Remote Data Delivery Incorporated

## **Contact:**

167 Sherbrook Street  
Winnipeg, Manitoba, Canada R3C 2B7

Phone: +1 (204) 975-4240

Fax: +1 (204) 452-7418

Email: [ttessier@solaradata.com](mailto:ttessier@solaradata.com)

Web Site: <http://www.solaradata.com>

**Tom Tessier, President**



Better Data. Better Decisions.

# Who We Are

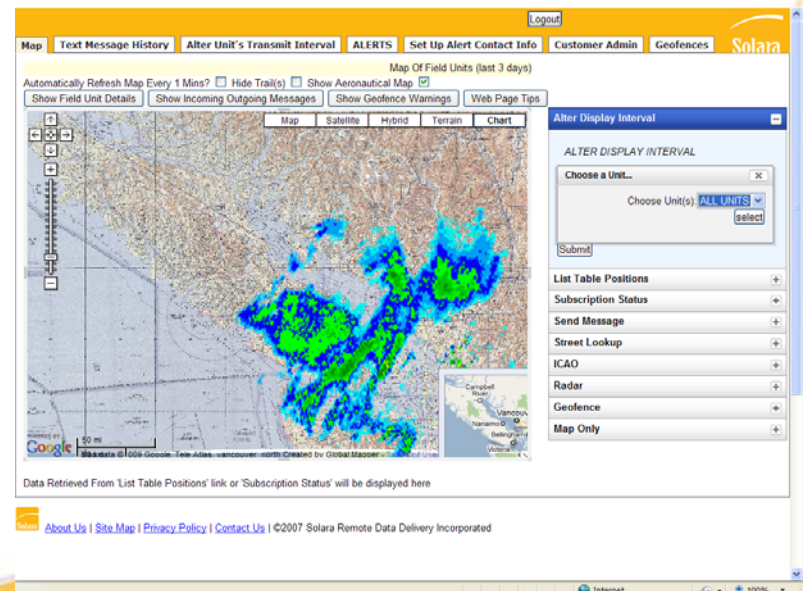
- We are a Canadian company who produces equipment and provides services for satellite communication and GPS tracking in every geographical location on the globe
- Our equipment is field-proven for use in extreme cold and is now the “Gold Standard” in the Canadian Arctic



# What We Do

## Solara Equipment and Software

- We build professional-quality handheld Iridium Satellite communication devices with GPS tracking and 2-way text communications that are CE, IP 68, FCC and Industry Canada approved
- We have a family of Solace software applications that communicate with the handheld devices and provide information to our clients through web browsers, PC applications, mobile telephones and e-mail
- Our products contain no flammable materials or dangerous goods



# ***Rugged portable devices excel in operation***

- Waterproof – to IP 68 submersion standard
- Works at extreme temperatures (-40° C to +65° C )
- Withstands shock and vibration – Exceeds Military Standard MIL-STD-810G
- Withstands crash test at 70 times the force of gravity (70 g's)

# Cold Operation - Design

- Each complete device is cold-tested to prior to shipping
- Cases are proven not to crack when dropped on hard surface at  $-40^{\circ}\text{C}$
- Display works at extreme cold temperatures



# Cold Operation - Use



- Cold Weather Kit external battery pack for primary lithiums



- Nylon carry case with open front option – no plastic cover to shatter in the cold



- Direct Connect Kit provides filtered power from vehicle, RAM Mount Bracket for ATV/vehicle/snowmobile mounting

# Cold Operation - Use

## Solara On Top of the World with the Catlin Arctic Survey



Solara congratulates the Catlin Arctic Survey on achieving the North Pole after a punishing 483 mile (773 km) trek

# Use Case: Mobile Operations

## *Solution:*

- Solara FT2100's proven antenna design permits use in motor vehicles, aircraft and helicopters **WITHOUT** the need to install permanent antennas, power cabling and mounting
- The FT2100 is easily set to transmit GPS position as often as once every 30 seconds
- Large keys are operable with gloves on
- Withstands the shock and vibration of operation over hard-packed windblown snow





# Use Case: Telemetry Gathering

## *Solution:*

- The built-in USB port can be set up for automatic transmission of data from an external device
- Extra A/D lines can be used for externally interfacing sensors via optional connector or up to two existing connector lines
- I/O channels can be used for remote control of devices via optional connector



*Thank you!*

Tom Tessier, President 204-975-4240  
Mike Scott, Director of Sales 204-975-4241  
Support 204-975-4244 or 877-975-4224

